

Endoscopic Ultrasound (EUS), Lower



Archbold
Gastroenterology

For an EUS of your lower intestinal tract, an insertion tube is placed into your large intestine to capture images of the of your rectum and colon. Since an ultra sound probe is part of the insertion tube, your doctor will be able to see beyond the lumen of your gastrointestinal tract to evaluate portions of your pelvic organs.

Your doctor will be able to take small tissue samples to identify lesions and stage cancer if needed.

Preparation

- Read your colon prep instruction 7 days prior to your test and follow them carefully.
- Pick up your laxative several days before your colonoscopy.
- Please make sure to follow your provider' s instruction regarding your medication.
- Always bring a current list of all your medication
- Bring your identification and insurance card
- Leave all your valuables at home
- **Arrange for an adult to drive you home and look after you for 24 hours.**

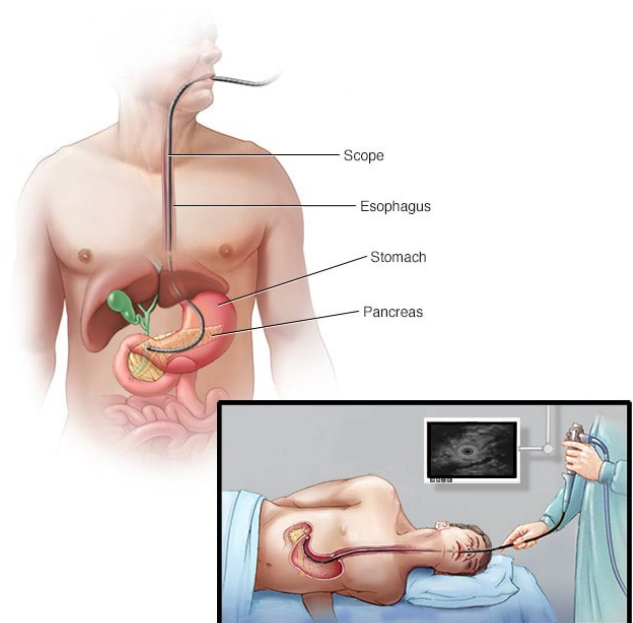
***You will have to complete a colon cleanse. Please, refer to "colonoscopy" for instructions.**

Procedure and discharge

After check-in, our nurses will take you to the pre-op area as soon as a bay becomes available. You will be seen by your gastroenterologist and anesthesiologist. Our nurses will make you comfortable, ask questions regarding your health history and start your IV. When your intra-op team is ready for you, you will be taken to the procedure room.

Your anesthetist will give you sedation prior to procedure start. The great majority of patients sleep through the entire test.

After the procedure you will wake up in the recovery room. You will likely feel sleepy and may be slightly unsteady. You may have a sensation of fullness and a mild gas pains. You may have to expel the gas we introduced during the procedure. Post-procedure nausea is possible but unlikely. Your gastroenterologist will go over findings with you and your family. Your nurse will give you discharge instructions including signs and symptoms of infection, bleeding and other emergencies. When you are ready for discharge, your care taker will pull the car into the discharge area and your nurse will take you out in a wheelchair. After departure, you will likely be able to resume your regular diet. You may resume regular activities the day after your test. You may resume regular activities the day after your test.



© MAYO FOUNDATION FOR MEDICAL EDUCATION AND RESEARCH. ALL RIGHTS RESERVED.